

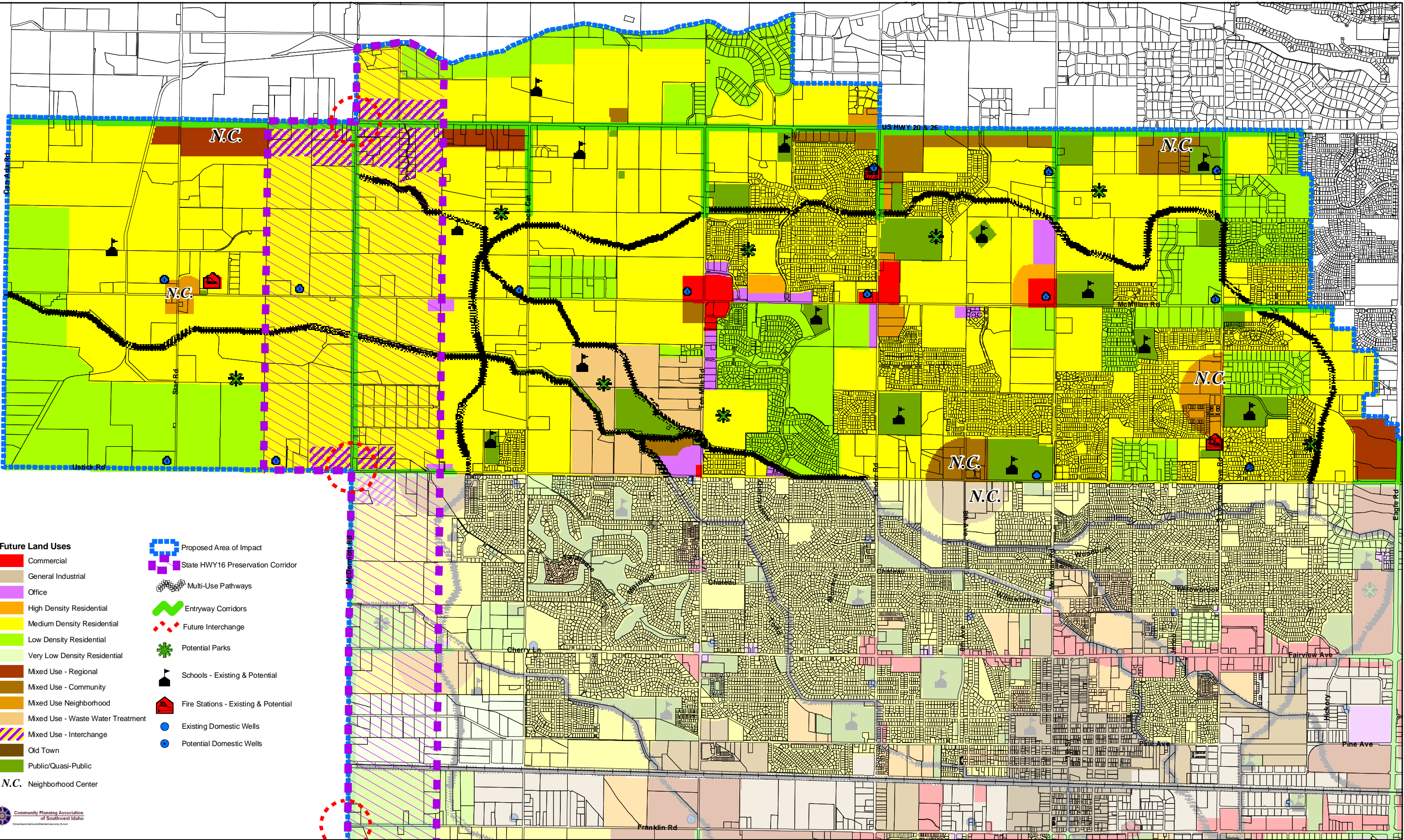
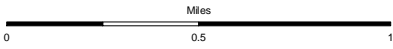
City of Meridian  
Future Land Use Map

Map Creation Date: August 2005

Map Adoption Date: \_\_\_\_\_

Draft

Draft



- Future Land Uses**
- Commercial
  - General Industrial
  - Office
  - High Density Residential
  - Medium Density Residential
  - Low Density Residential
  - Very Low Density Residential
  - Mixed Use - Regional
  - Mixed Use - Community
  - Mixed Use Neighborhood
  - Mixed Use - Waste Water Treatment
  - Mixed Use - Interchange
  - Old Town
  - Public/Quasi-Public
  - N.C. Neighborhood Center
- Proposed Area of Impact**
- State HWY16 Preservation Corridor
  - Multi-Use Pathways
  - Entryway Corridors
  - Future Interchange
  - Potential Parks
  - Schools - Existing & Potential
  - Fire Stations - Existing & Potential
  - Existing Domestic Wells
  - Potential Domestic Wells